

MODULES

It is essential to design systems always in a way, that they feature multi purpose use. For successful applications of test systems various completely different options are required. PRÜFTECHNIK Schneider & Koch stands for the fact, that more than hundred additional cards are available for the existing system, from MUX-ER through measurement/stimuli cards, load modules up to LWL modules.

MDA MODULE

The MDA test is conducted with an in-circuit test module of the latest generation and can be equipped with up to 2560 pins, depending on requirement. The system provides high frequent test cycles at low costs for both, acquisition and operation. At the same time the system features easy operation and programming (no programming knowledge required). To conduct a MDA test means to quickly detect short circuits, breaks and faulty components. Accuracy and stability of the measurements is ensured by both, a 6-wire guarding and a 4-wire Kelvin measurement.



MDA FUNCTION TEST RACK

A function test rack for extending the MDA/ ICT tests by a low-level function test. The system is controlled via LAN (LXI), and the MDA switch matrix is used as measurement matrix.



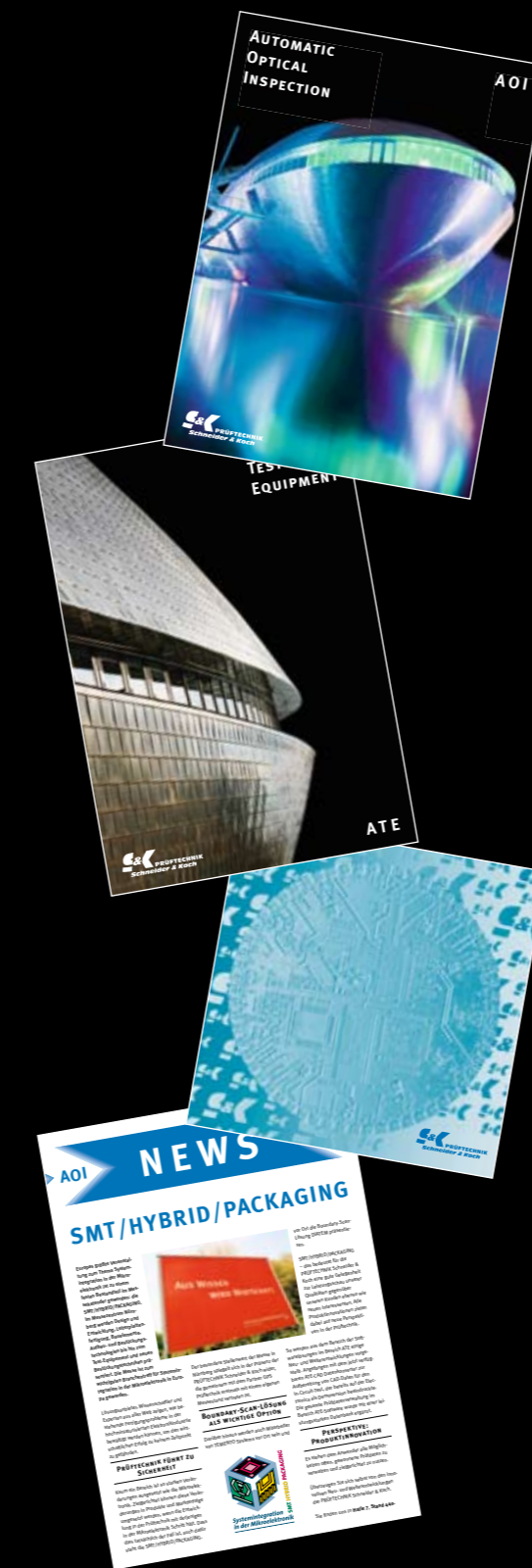
PXI MODULE



Integration of high-quality standard PXI components, which can be embedded into the complete system in a flexible way, and thus makes the system a compact and high-performance one.

LWL03 COLOR

The color and intensity detection is realized via optical fiber connections (8 to 64 fold). Up to 15 different LED colors can be detected. Values for the colors white, red, green, yellow and orange are saved in the module, which can be reloaded any time. Additionally individual colors are learnable.



PRÜFTECHNIK Schneider & Koch
 Ingenieurgesellschaft mbH
 Fahrenheitstraße 10
 28359 Bremen · Germany
 Phone +49 (0) 421 223 00 30
 Fax +49 (0) 421 21 54 55
 info@prueftechnik-sk.de
 www.prueftechnik-sk.de

You've got a real partner.

AUTOMATIC TEST- EQUIPMENT



ATE

Automatic Test Equipment

– Ti²CA[®] line –

The Ti²CA[®] line with a great number of electronic racks can be controlled via LAN (LXI). The basis system with a mainframe for function test and multiplexer cards can be adapted to the Ti²CA[®] platform cards by means of various standard modules, depending on requirement. Free scalable solutions for applications with high voltages and high currents down to low-level signals and high frequency ranges can be displayed. The platform features a controller, which is addressable by a PC for use of standard Ti²CA[®] cards in customer specific test systems. The Ti²CA[®] line is variable in size and stage of extension.

Hardware

Innovation is always focused on customer benefits. The platform Ti²CA[®] features a modern system architecture and can easily be adapted to a lot of very different applications by means of various options. The system is available in several variants or optionally, as module for integration into the test equipment of the user.

Beginning with a simple table top solution with external control computer up to complex systems, everything is thinkable. Depending on application, also several Ti²CA[®] boxes can be integrated, That means free scalable solutions for extensive applications. Due to the used software, controlling or addressing of several Ti²CA[®] boxes, respectively, is realized fully automatically, without the need of programming.

Software

Missing components, short circuits, breaks, poor or not welded components: The MDA test will detect all faults Quick and reliably, independent of the fact, that the measurement of resistors, capacitors, inductance coils, diodes and transistors take place within milliseconds. The MDA test system distinguishes especially by its test speed and high process reliability. No programming knowledge is required. Due to its compact modular design the system can easily be upgraded.

In order to allow an even more versatile use of your system, PRÜFTECHNIK Schneider & Koch offers various options for your test systems. Programming with LabWindows CVI, LabView, Visual Basic, C/C++ and further programming languages is possible.

Combi test

The performance power of a test system and its target oriented integration into the required application at site is the essential fact for economical success. Therefore, in ideal cases single development and design of customer specific test devices should be conducted.

Production faults must be detected quick and precisely and non-conforming assemblies must be rejected immediately. Universally usable systems only provide a free scalable platform with open modular hardware and software structure, which are tuned consequently to optimum function. Due to the highly flexible systems the developed solutions may be used inter-sectional.

Ti²CA[®] BASE

- 32 channel multiplexer SW configurable (1 x 32CH, 2 x 16CH, 4 x 8CH), max. 230VAC, max. 2A
- system power supply via external plug-in type AC adapter
- 3 N bus cards possible on integrated slots

Ti²CA[®] LIGHT

- integrated system power supply units
- up to 8 Ti²CA[®] N bus cards
- up to 5 multiplexer cards (=16 devices MPs + 64 DUT MPs)
- H bus cards possible on separate slots

Ti²CA[®] PREMIUM

- integrated system power supply units
- up to 8 Ti²CA[®] N bus cards per backplane with 5TE matrix
- mixed usage of up to 16 units 16 x 8/4 x 16 matrix cards
- H bus cards possible on separate slots



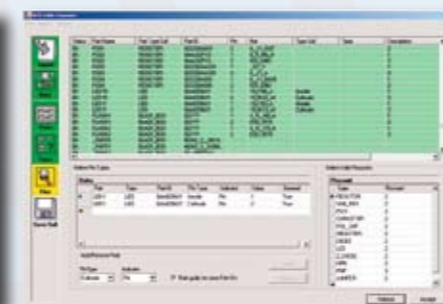
WINSPARK[®]

WinSPARK[®] is the software for monitoring all function tests. The system software WinSPARK[®] is based on LabWindows CVI, LabView, Visual Basic and is open, clearly structured and user-friendly. Programming can be performed easily and comfortably.



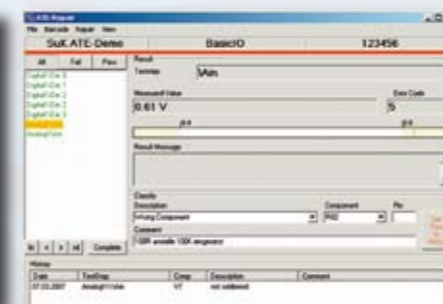
ATE CAD

With the CAD converter **ATE CAD** there is software available, which distinguishes by a very comfortable format transformation and can easily be adapted to different CAD systems, as well as to various test system formats.



ATE REPAIR

This software provides indication of repair data and further information about faults, measurement values, nominal values, tolerances and also the history of repairs. In combination with the software package **LVBoard** there is also a graphical indication of the assembly available for finding the wanted component.



COMBI TEST – THE SOLUTION

The system consists of the open modular hardware concept Ti²CA[®], a MDA module and the system software WinSPARK[®]. Major application fields are intermediate and final tests of printed circuit boards and devices.

The test run is focused on an optimum of speed and accuracy: After inserting the test sample it will be discharged first. Then short circuit and break tests will be performed. Following the MDA component test will be conducted. If faults are detected, the test will be interrupted at this position. If the test does not show any faults, then the function test will be started. The fault data can be further processed any time.

